

University of Maryland Baltimore County  
Department of Information Systems  
Fall 2015

**IS 450/650: Data Communications and Networks**  
**Homework Assignment 1**  
**Wireshark Lab**

(Handed Out: September 22, 2015 (Tuesday), Due: September 29, 2015 (Tuesday) in class)

**Instructions:**

Please complete this assignment individually. This lab contains **three** parts, and at the end of each part you will be asked to answer a series of questions to test your understanding of the “packet sniffing” software. To earn credit, you need to finish each part using the Wireshark software and submit a report containing relevant experiment results. **Please notice that screenshots are useful to demonstrate your analysis and calculation, so they are required for most of these questions.**

Most of your solutions should be unique: it depends on your network environment, IP address and computer configurations. Therefore, since you are working on this experiment individually, there should be little similarity in your reports.

**Part 1: Getting started (7.5 pts × 4 = 30 pts)**

This first lab primarily aims to introduce you to a useful packet sniffing and protocol analyzing software – **Wireshark**. You can download the software from its official website: <http://www.wireshark.org/download.html>

Appendix A of this assignment is a tutorial from J. F. Kurose and K. W. Ross, and this is a good documentation to get started with. At the end of the tutorial there are four questions. Please answer these questions as your solution for this Part 1.

## Part 2: HTTP (7pts × 6 = 42 pts)

In this section, we are going to learn about how the HTTP Get/Response mechanism works.

### Do the following:

1. Start up your web browser.
2. Start up the Wireshark and start capturing.
3. Enter the following to your browser: <http://userpages.umbc.edu/~nroy/>
4. Wait for a bit more than 25 seconds then stop Wireshark packet capture.
5. Enter “http && (!udp.port == 1900)” (without quotes) in the display-filter-specification window, so that only captured HTTP messages will be displayed in the packet-listing window.

By looking at the information in the HTTP GET and response messages, answer the following questions. Please include the GET and response messages with a screenshot in your report and indicate where in the message you have found the information that answers the following questions.

1. If you just enter “http” in the display-filter-specification window, what other protocols are listed in the packet-listing window? By comparing these two commands “http” and “http && (!udp.port == 1900)” and their outputs, what conclusions can you get?
2. What is the IP address of your computer and the server?
3. What is the status code returned from the server to your browser? What other HTTP status codes do you know?
4. Draw Flow Graph by using Wireshark. You can achieve this by choosing Wireshark → Statistics → Flow Graph → select the option: Displayed packets; General flow; Standard source/destination addressed → then click OK.  
Save and copy this flow graph into your answer. Briefly explain the process of HTTP request and response based on this flow graph.
5. Draw a graph that compares the number of captured TCP and UDP packets. (Hint: you can do this by using Wireshark → Statistics → I/O Graph.)  
Save and copy this graph into your answer. What conclusion can you get from this graph? (e.g. Which protocol has more packets? Why? When does the TCP packet occur? etc. )  
Please briefly explain your conclusion.
6. Is the HTTP message sent over TCP or UDP in this experiment? How did you figure it out by using Wireshark?

### **Part 3: DNS (7pts × 4 = 28 pts)**

In this section we want to capture the DNS packets that are generated by ordinary Web surfing activity.

#### **Do the following:**

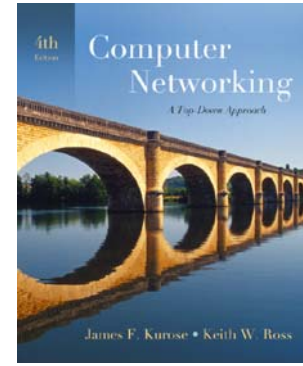
1. Use ipconfig/flushdns to empty the DNS cache in your host.
2. Open your browser and empty your browser cache. (With Internet Explorer, go to Tools menu and select Internet Options; then in the General tab select Delete Files.)
3. Open Wireshark and enter “ip.addr == your\_IP\_address” into the filter. You can obtain your IP address with ipconfig in command line. This filter removes all packets that neither originate nor are destined to your host.
4. Start packet capture in Wireshark.
5. Open your browser, visit the Web page: <http://www.ietf.org>
6. Stop packet capture.

By looking at the information in the DNS query and response messages, answer the following questions. Please include the two DNS messages in your report and indicate where in the message you have found the information that answers the following questions.

1. Locate the DNS query and response messages. Are they sent over UDP or TCP?
2. What is the destination port for the DNS query message? What is the source port of DNS response message?
3. Consider the subsequent TCP SYN packet sent by your host. Does the destination IP address of the SYN packet correspond to any of the IP address provided in the DNS response message?
4. This web page contains images. Before retrieving each image, does your host issue new DNS queries?

**Appendix A** (Please see next page)

# Wireshark Lab: Getting Started



Computer Networking: A Top-down Approach, 4<sup>th</sup> edition.

Version: 2.0  
© 2007 J.F. Kurose, K.W. Ross. All Rights Reserved

*“Tell me and I forget. Show me and I remember. Involve me and I understand.”*  
Chinese proverb

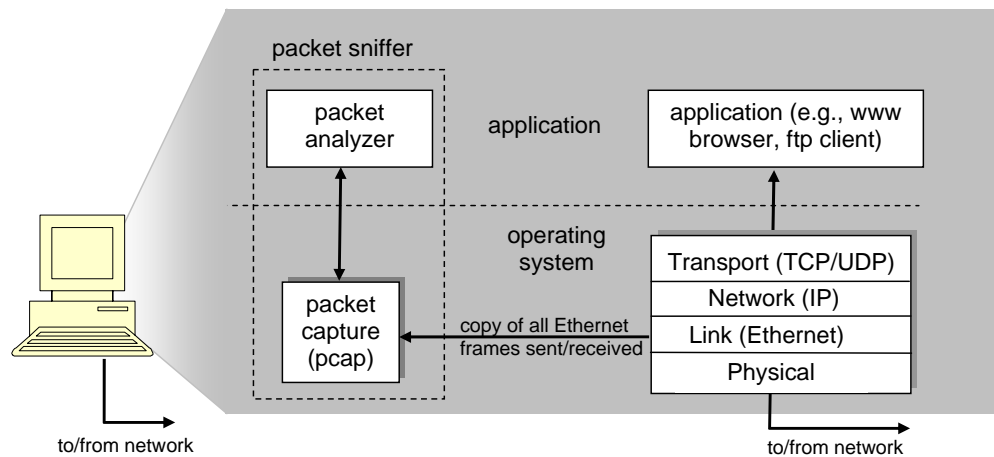
One’s understanding of network protocols can often be greatly deepened by “seeing protocols in action” and by “playing around with protocols” – observing the sequence of messages exchanged between two protocol entities, delving down into the details of protocol operation, and causing protocols to perform certain actions and then observing these actions and their consequences. This can be done in simulated scenarios or in a “real” network environment such as the Internet. The Java applets that accompany this text take the first approach. In these Wireshark labs<sup>1</sup>, we’ll take the latter approach. You’ll be running various network applications in different scenarios using a computer on your desk, at home, or in a lab. You’ll observe the network protocols in your computer “in action,” interacting and exchanging messages with protocol entities executing elsewhere in the Internet. Thus, you and your computer will be an integral part of these “live” labs. You’ll observe, and you’ll learn, by doing.

The basic tool for observing the messages exchanged between executing protocol entities is called a **packet sniffer**. As the name suggests, a packet sniffer captures (“sniffs”) messages being sent/received from/by your computer; it will also typically store and/or display the contents of the various protocol fields in these captured messages. A packet sniffer itself is passive. It observes messages being sent and received by applications and protocols running on your computer, but never sends packets itself. Similarly, received packets are never explicitly addressed to the packet sniffer. Instead, a packet sniffer receives a *copy* of packets that are sent/received from/by application and protocols executing on your machine.

---

<sup>1</sup> Earlier versions of these labs used the Ethereal packet analyzer. In May 2006, the developer of Ethereal joined a new company, and had to leave the Ethereal® trademarks behind. He then created the Wireshark network protocol analyzer, a successor to Ethereal®. Since Ethereal® is no longer being actively maintained or developed, we have thus switched these labs over to Wireshark with the 4<sup>th</sup> edition of our text.

Figure 1 shows the structure of a packet sniffer. At the right of Figure 1 are the protocols (in this case, Internet protocols) and applications (such as a web browser or ftp client) that normally run on your computer. The packet sniffer, shown within the dashed rectangle in Figure 1 is an addition to the usual software in your computer, and consists of two parts. The **packet capture library** receives a copy of every link-layer frame that is sent from or received by your computer. Recall from the discussion from section 1.5 in the text (Figure 1.20<sup>2</sup>) that messages exchanged by higher layer protocols such as HTTP, FTP, TCP, UDP, DNS, or IP all are eventually encapsulated in link-layer frames that are transmitted over physical media such as an Ethernet cable. In Figure 1, the assumed physical media is an Ethernet, and so all upper layer protocols are eventually encapsulated within an Ethernet frame. Capturing all link-layer frames thus gives you all messages sent/received from/by all protocols and applications executing in your computer.



**Figure 1:** Packet sniffer structure

The second component of a packet sniffer is the **packet analyzer**, which displays the contents of all fields within a protocol message. In order to do so, the packet analyzer must “understand” the structure of all messages exchanged by protocols. For example, suppose we are interested in displaying the various fields in messages exchanged by the HTTP protocol in Figure 1. The packet analyzer understands the format of Ethernet frames, and so can identify the IP datagram within an Ethernet frame. It also understands the IP datagram format, so that it can extract the TCP segment within the IP datagram. Finally, it understands the TCP segment structure, so it can extract the HTTP message contained in the TCP segment. Finally, it understands the HTTP protocol and so, for example, knows that the first bytes of an HTTP message will contain the string “GET,” “POST,” or “HEAD,” as shown in Figure 2.8 in the text.

<sup>2</sup> Figure numbers refer to figures in the 4<sup>th</sup> edition of our text.

We will be using the Wireshark packet sniffer [<http://www.wireshark.org/>] for these labs, allowing us to display the contents of messages being sent/received from/by protocols at different levels of the protocol stack. (Technically speaking, Wireshark is a packet analyzer that uses a packet capture library in your computer). Wireshark is a free network protocol analyzer that runs on Windows, Linux/Unix, and Mac computers. It's an ideal packet analyzer for our labs – it is stable, has a large user base and well-documented support that includes a user-guide ([http://www.wireshark.org/docs/wsug\\_html\\_chunked/](http://www.wireshark.org/docs/wsug_html_chunked/)), man pages (<http://www.wireshark.org/docs/man-pages/>), and a detailed FAQ (<http://www.wireshark.org/faq.html>), rich functionality that includes the capability to analyze hundreds of protocols, and a well-designed user interface. It operates in computers using Ethernet, Token-Ring, FDDI, serial (PPP and SLIP), 802.11 wireless LANs, and ATM connections (if the OS on which it's running allows Wireshark to do so).

## Getting Wireshark

In order to run Wireshark, you will need to have access to a computer that supports both Wireshark and the *libpcap* or *WinPCap* packet capture library. The *libpcap* software will be installed for you, if it is not installed within your operating system, when you install Wireshark.. See <http://www.wireshark.org/download.html> for a list of supported operating systems and download sites

Download and install the Wireshark software:

- Go to <http://www.wireshark.org/download.html> and download and install the Wireshark binary for your computer.
- Download the Wireshark user guide.

The Wireshark FAQ has a number of helpful hints and interesting tidbits of information, particularly if you have trouble installing or running Wireshark.

# Running Wireshark

When you run the Wireshark program, the Wireshark graphical user interface shown in Figure 2 will be displayed. Initially, no data will be displayed in the various windows.

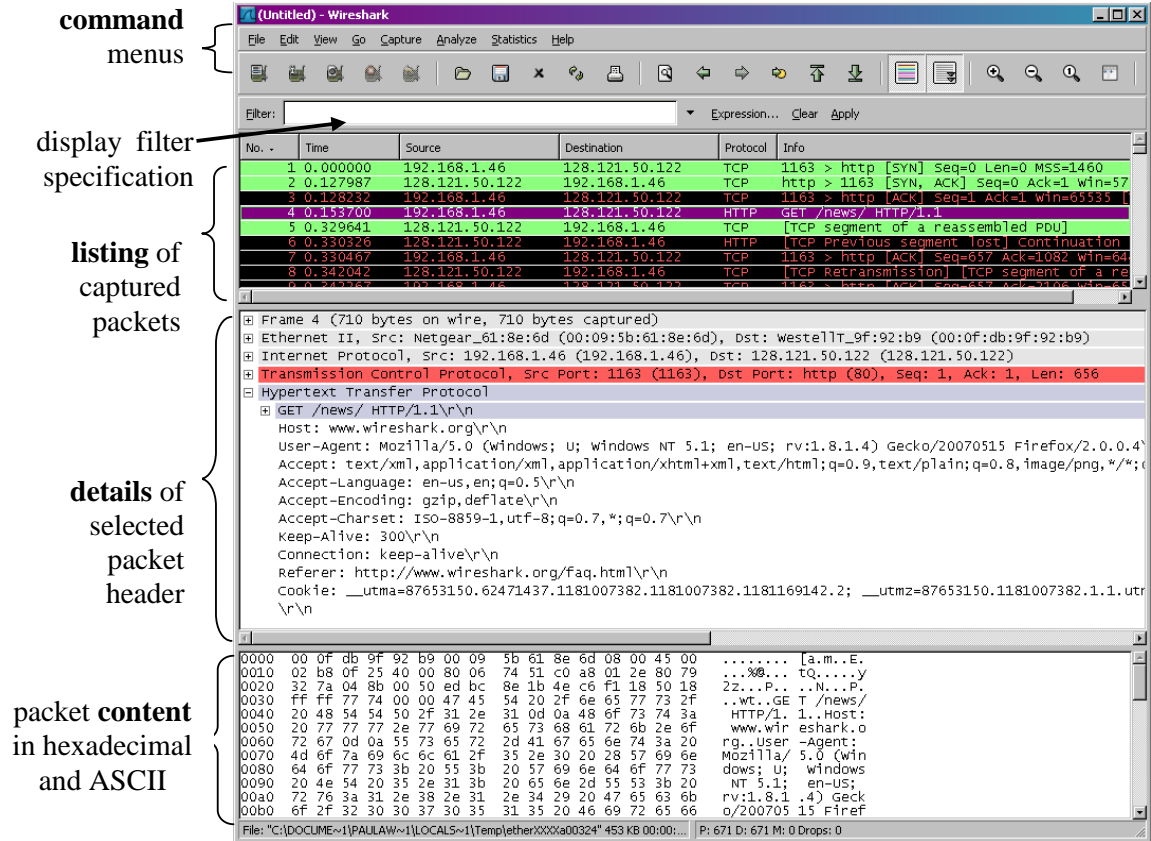


Figure 2: Wireshark Graphical User Interface

The Wireshark interface has five major components:

- The **command menus** are standard pulldown menus located at the top of the window. Of interest to us now are the File and Capture menus. The File menu allows you to save captured packet data or open a file containing previously captured packet data, and exit the Wireshark application. The Capture menu allows you to begin packet capture.

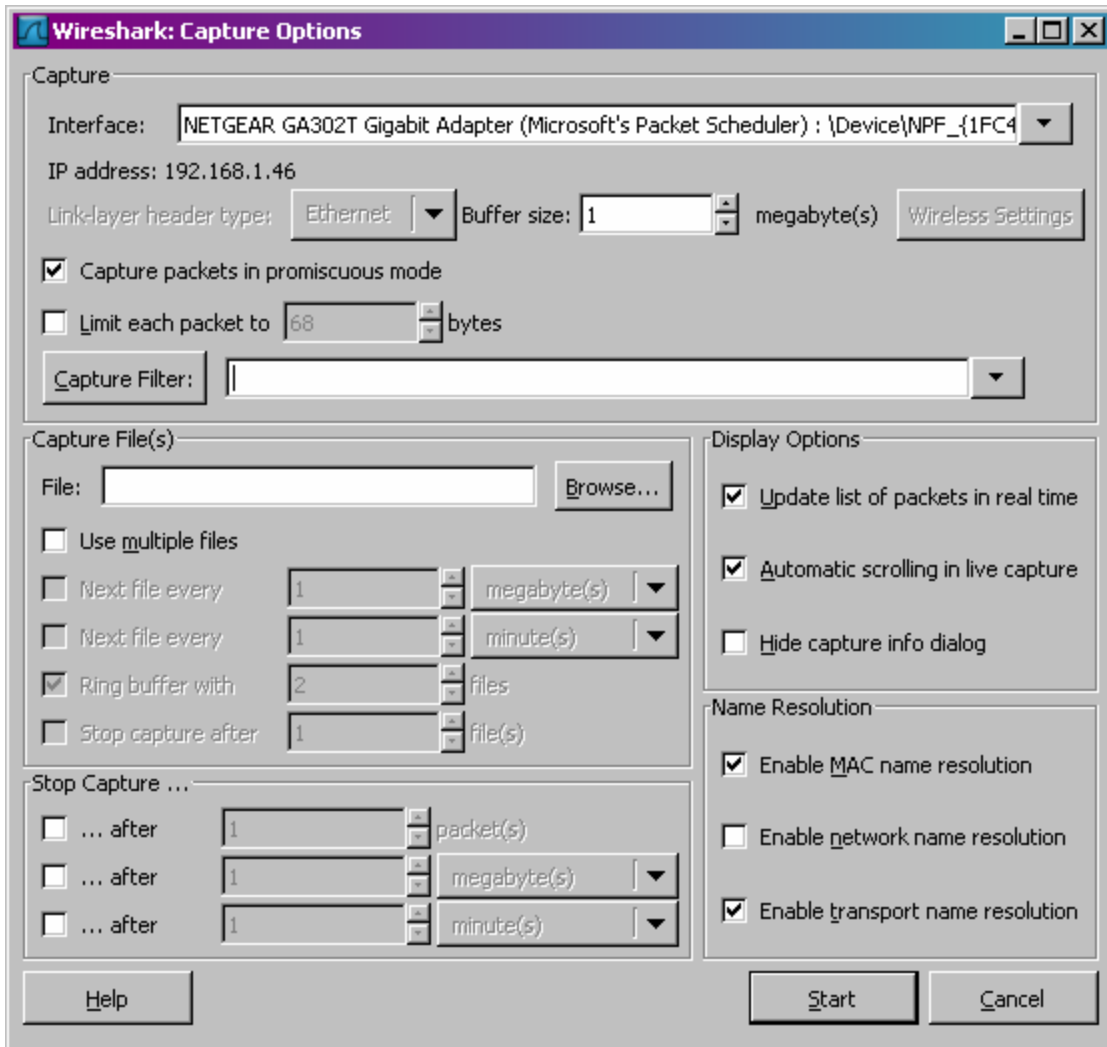
- The **packet-listing window** displays a one-line summary for each packet captured, including the packet number (assigned by Wireshark; this is *not* a packet number contained in any protocol's header), the time at which the packet was captured, the packet's source and destination addresses, the protocol type, and protocol-specific information contained in the packet. The packet listing can be sorted according to any of these categories by clicking on a column name. The protocol type field lists the highest level protocol that sent or received this packet, i.e., the protocol that is the source or ultimate sink for this packet.
- The **packet-header details window** provides details about the packet selected (highlighted) in the packet listing window. (To select a packet in the packet listing window, place the cursor over the packet's one-line summary in the packet listing window and click with the left mouse button.). These details include information about the Ethernet frame (assuming the packet was sent/received over an Ethernet interface) and IP datagram that contains this packet. The amount of Ethernet and IP-layer detail displayed can be expanded or minimized by clicking on the plus-or-minus boxes to the left of the Ethernet frame or IP datagram line in the packet details window. If the packet has been carried over TCP or UDP, TCP or UDP details will also be displayed, which can similarly be expanded or minimized. Finally, details about the highest level protocol that sent or received this packet are also provided.
- The **packet-contents window** displays the entire contents of the captured frame, in both ASCII and hexadecimal format.
- Towards the top of the Wireshark graphical user interface, is the **packet display filter field**, into which a protocol name or other information can be entered in order to *filter* the information displayed in the packet-listing window (and hence the packet-header and packet-contents windows). In the example below, we'll use the packet-display filter field to have Wireshark hide (not display) packets except those that correspond to HTTP messages.

## Taking Wireshark for a Test Run

The best way to learn about any new piece of software is to try it out! We'll assume that your computer is connected to the Internet via a wired Ethernet interface. Do the following

1. Start up your favorite web browser, which will display your selected homepage.
2. Start up the Wireshark software. You will initially see a window similar to that shown in Figure 2, except that no packet data will be displayed in the packet-listing, packet-header, or packet-contents window, since Wireshark has not yet begun capturing packets.
3. To begin packet capture, select the Capture pull down menu and select *Options*. This will cause the "Wireshark: Capture Options" window to be displayed, as shown in Figure 3.

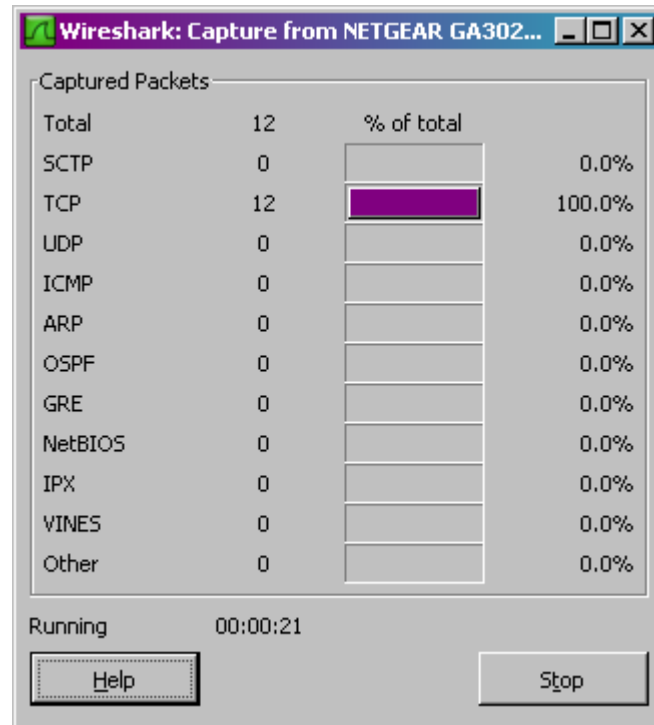




**Figure 3:** Wireshark Capture Options Window

4. You can use most of the default values in this window, but uncheck “Hide capture info dialog” under Display Options. The network interfaces (i.e., the physical connections) that your computer has to the network will be shown in the Interface pull down menu at the top of the Capture Options window. In case your computer has more than one active network interface (e.g., if you have both a wireless and a wired Ethernet connection), you will need to select an interface that is being used to send and receive packets (mostly likely the wired interface). After selecting the network interface (or using the default interface chosen by Wireshark), click Start. Packet capture will now begin - all packets being sent/received from/by your computer are now being captured by Wireshark!

- Once you begin packet capture, a packet capture summary window will appear, as shown in Figure 4. This window summarizes the number of packets of various types that are being captured, and (importantly!) contains the *Stop* button that will allow you to stop packet capture. Don't stop packet capture yet.



**Figure 4:** Wireshark Packet Capture Window

- While Wireshark is running, enter the URL:  
<http://gaia.cs.umass.edu/wireshark-labs/INTRO-wireshark-file1.html>  
and have that page displayed in your browser. In order to display this page, your browser will contact the HTTP server at `gaia.cs.umass.edu` and exchange HTTP messages with the server in order to download this page, as discussed in section 2.2 of the text. The Ethernet frames containing these HTTP messages will be captured by Wireshark.
- After your browser has displayed the `INTRO-wireshark-file1.html` page, stop Wireshark packet capture by selecting stop in the Wireshark capture window. This will cause the Wireshark capture window to disappear and the main Wireshark window to display all packets captured since you began packet capture. The main Wireshark window should now look similar to Figure 2. You now have live packet data that contains all protocol messages exchanged between your computer and other network entities! The HTTP message exchanges with the `gaia.cs.umass.edu` web server should appear somewhere in the listing of packets captured. But there will be many other types of packets displayed as well (see, e.g., the many different protocol types shown in the *Protocol* column in Figure 2).

Even though the only action you took was to download a web page, there were evidently many other protocols running on your computer that are unseen by the user. We'll learn much more about these protocols as we progress through the text! For now, you should just be aware that there is often much more going on than "meet's the eye"!

8. Type in "http" (without the quotes, and in lower case – all protocol names are in lower case in Wireshark) into the display filter specification window at the top of the main Wireshark window. Then select *Apply* (to the right of where you entered "http"). This will cause only HTTP message to be displayed in the packet-listing window.
9. Select the first http message shown in the packet-listing window. This should be the HTTP GET message that was sent from your computer to the gaia.cs.umass.edu HTTP server. When you select the HTTP GET message, the Ethernet frame, IP datagram, TCP segment, and HTTP message header information will be displayed in the packet-header window<sup>3</sup>. By clicking plus-and-minus boxes to the left side of the packet details window, *minimize* the amount of Frame, Ethernet, Internet Protocol, and Transmission Control Protocol information displayed. *Maximize* the amount information displayed about the HTTP protocol. Your Wireshark display should now look roughly as shown in Figure 5. (Note, in particular, the minimized amount of protocol information for all protocols except HTTP, and the maximized amount of protocol information for HTTP in the packet-header window).
10. Exit Wireshark

Congratulations! You've now completed the first lab.

---

<sup>3</sup> Recall that the HTTP GET message that is sent to the gaia.cs.umass.edu web server is contained within a TCP segment, which is contained (encapsulated) in an IP datagram, which is encapsulated in an Ethernet frame. If this process of encapsulation isn't quite clear yet, review section 1.5 in the text

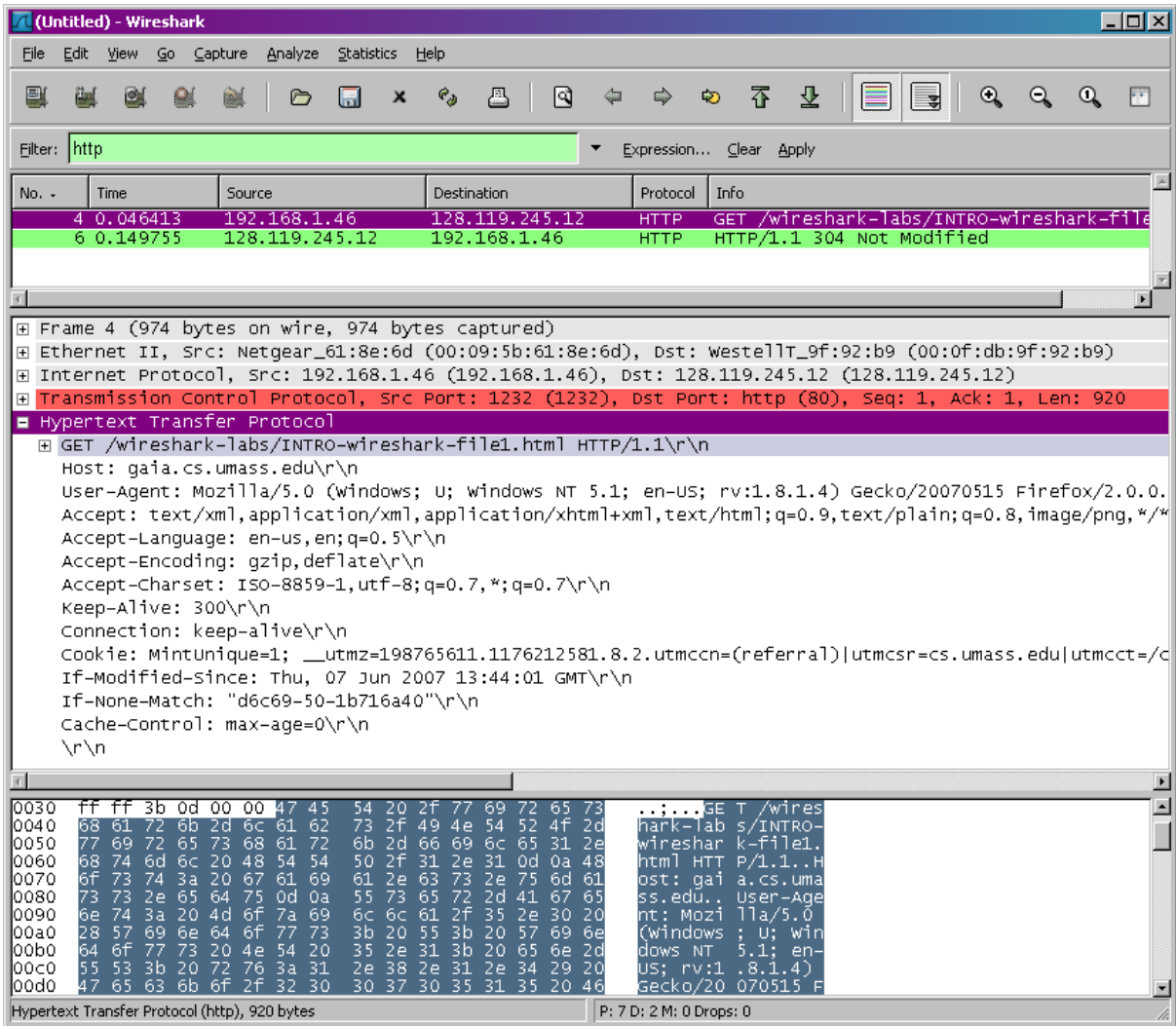


Figure 5: Wireshark display after step 9

## What to hand in

The goal of this first lab was primarily to introduce you to Wireshark. The following questions will demonstrate that you've been able to get Wireshark up and running, and have explored some of its capabilities. Answer the following questions, based on your Wireshark experimentation:

1. List up to 10 different protocols that appear in the protocol column in the unfiltered packet-listing window in step 7 above.
2. How long did it take from when the HTTP GET message was sent until the HTTP OK reply was received? (By default, the value of the Time column in the packet-listing window is the amount of time, in seconds, since Wireshark tracing began. To display the Time field in time-of-day format, select the Wireshark *View* pull down menu, then select *Time Display Format*, then select *Time-of-day*.)
3. What is the Internet address of the gaia.cs.umass.edu (also known as www-net.cs.umass.edu)? What is the Internet address of your computer?
4. Print the two HTTP messages displayed in step 9 above. To do so, select *Print* from the Wireshark *File* command menu, and select "*Selected Packet Only*" and "*Print as displayed*" and then click OK.